

DESCRIPTION

The EV2019-N-00A is an evaluation board for the MP2019 and MPQ2019, a low linear regulator that supplies power to systems with high voltage batteries.

MP2019 and MPQ2019 includes a wide 2.5V to 40V input range, low dropout voltage and low quiescent supply current. The low quiescent current and low dropout voltage allow operations at extremely low power levels. Therefore, the MP2019 and MPQ2019 is ideal for the low power microcontrollers and the battery-powered equipments.

The EV2019-N-00A is a fully assembled and tested evaluation board. It generates a +5V output voltage at load current up to 300mA from a 6V to 40V input range.

ELECTRICAL SPECIFICATIONS

| Parameter | Symbol | Value | Units |
|----------------|-----------|--------|-------|
| Input Voltage | V_{IN} | 6 – 40 | V |
| Output Voltage | V_{OUT} | 5 | V |
| Output Current | I_{OUT} | 300 | mA |

FEATURES

- 6V to 40V Input Range
- 10 μ A Quiescent Supply Current
- 300mA specified current
- 420mV Dropout at 300mA Load
- Output \pm 2% Accuracy
- Specified current limit
- Thermal Shutdown
- -40°C to +125°C Specified Junction Temperature Range
- Includes SOIC8-EP Package

APPLICATIONS

- Industrial/Automotive Applications
- Portable/Battery-Powered Equipment
- Ultra low power Microcontrollers
- Cellular Handsets
- Medical Imaging

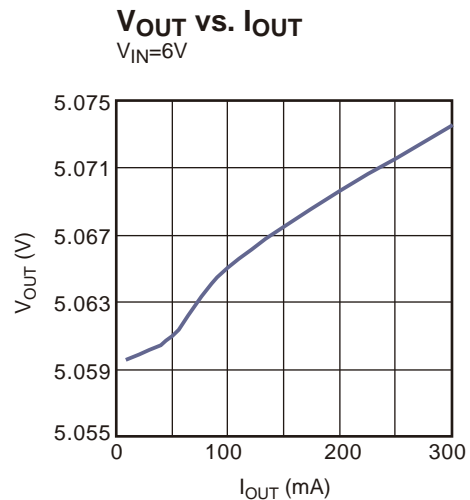
All MPS parts are lead-free and adhere to the RoHS directive. For MPS green status, please visit MPS website under Quality Assurance. "MPS" and "The Future of Analog IC Technology" are Registered Trademarks of Monolithic Power Systems, Inc.

EV2019-N-00A EVALUATION BOARD

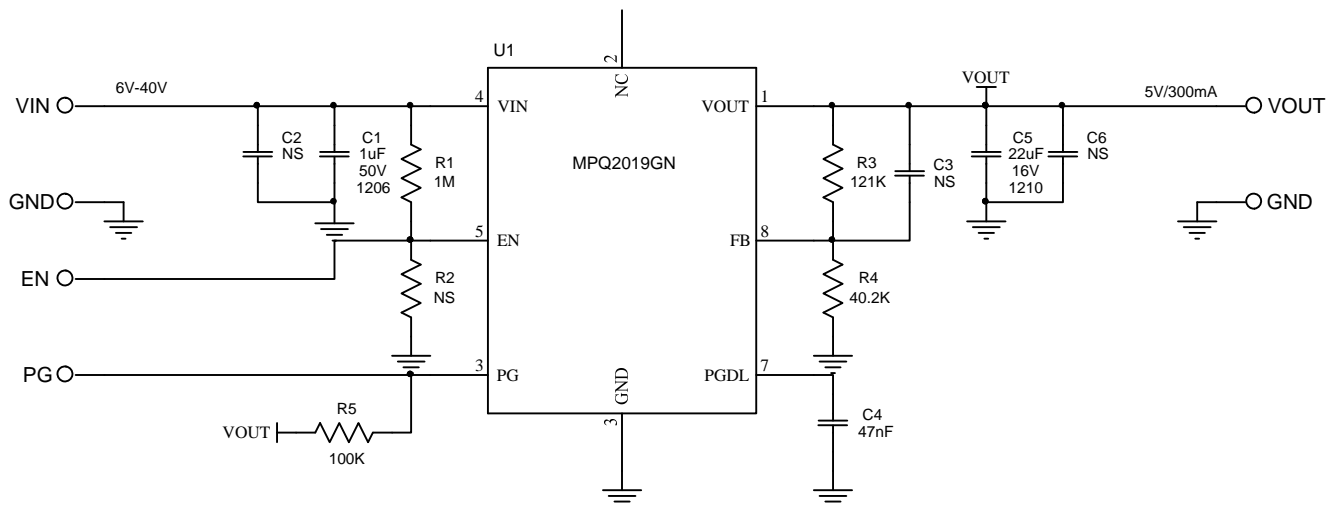


(L x W x H) 2.5" x 2.5" x 0.4"
(6.35cm x 6.35cm x 1.0cm)

| Board Number | MPS IC Number |
|--------------|---------------|
| EV2019-N-00A | MPQ2019GN |



EVALUATION BOARD SCHEMATIC



EV2019-N-00A BILL OF MATERIALS

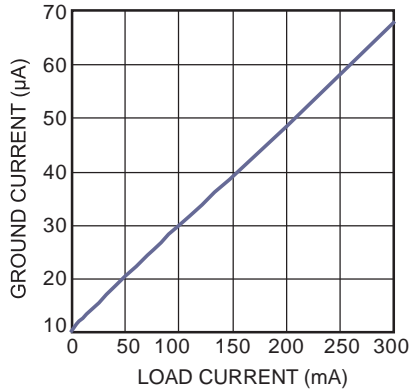
| Qty | RefDes | Value | Description | Package | Manufacturer | Manufacturer_P/N |
|-----|------------------------|-------|--------------------------|---------|--------------|--------------------|
| 1 | C1 | 1uF | Ceramic Cap, 50V, X7R | 1206 | Murata | GRM31CR71H225KA88L |
| 3 | C2, C3, C6 | NS | | | | |
| 1 | C4 | 47nF | Ceramic Cap, 50V, X7R | 0603 | Murata | GRM188R71H473KA61D |
| 1 | C5 | 22uF | Ceramic Cap, 16V, X7R | 1210 | Murata | GRM32ER71C226KEA8L |
| 1 | R1 | 1M | Film Res,5% | 0603 | Yageo | RC0603JR-071ML |
| 1 | R2 | NS | | | | |
| 1 | R3 | 121K | Film Res,1% | 0603 | Yageo | RC0603FR-07121KL |
| 1 | R4 | 40.2K | Film Res,1% | 0603 | Yageo | RC0603JR-0740K2L |
| 1 | R5 | 100K | Film Res,1% | 0603 | Yageo | RC0603FR-07100KL |
| 1 | U1 | | Linear Regulator | SOIC8E | MPS | MPQ2019GN |
| 4 | VIN, GND, GND, VOUT | | 2.0 Golden Pin | | HZ | |
| 3 | PG, GND, EN | | 2.54mm Test Pin | | Any | |

EVB TEST RESULTS

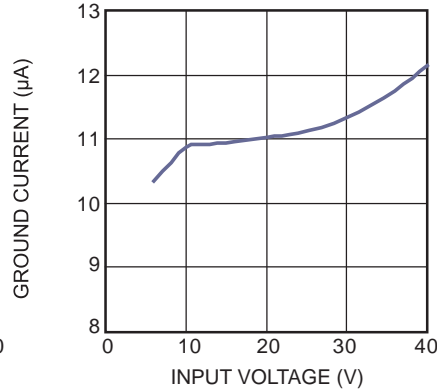
Performance waveforms are tested on the evaluation board.

$V_{OUT} = 5V$, $T_A = 25^\circ C$, unless otherwise noted.

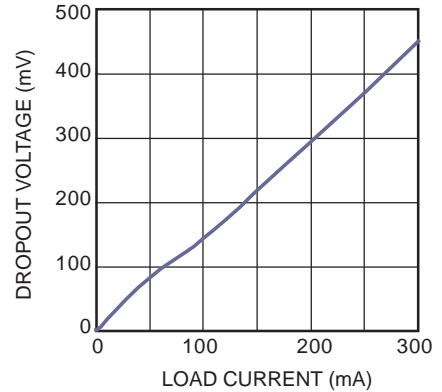
Ground Current vs. Load Current
 $V_{IN}=6V$



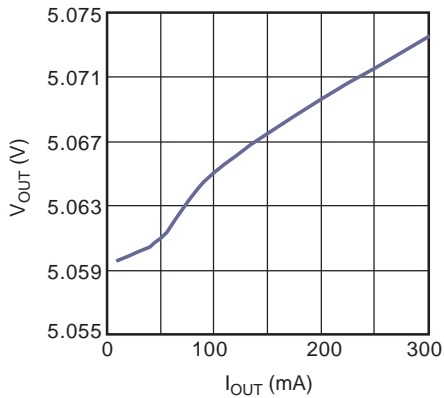
Ground Current vs. V_{IN}
 $I_{OUT}=0mA$



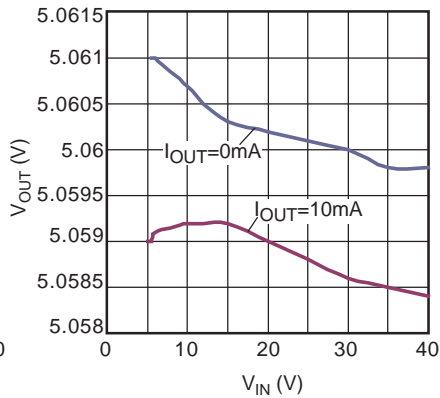
Dropout Voltage vs. Load Current



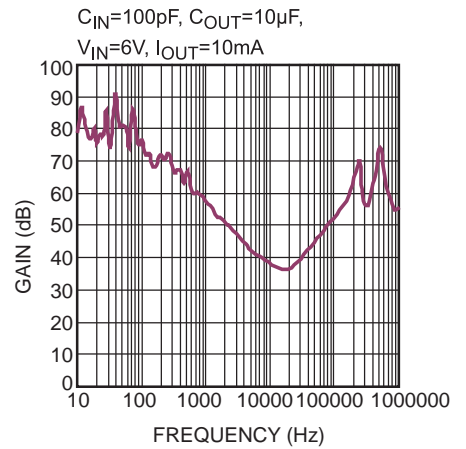
V_{OUT} vs. I_{OUT}
 $V_{IN}=6V$



V_{OUT} vs. V_{IN}



PSRR vs. Frequency



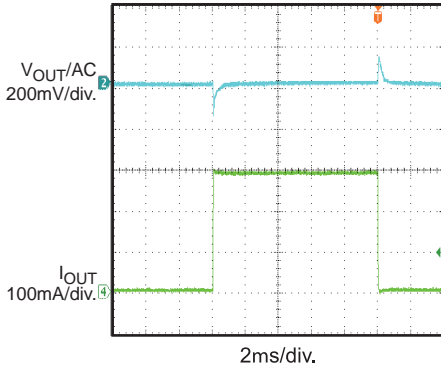
EVB TEST RESULTS *(continued)*

Performance waveforms are tested on the evaluation board.

$V_{OUT} = 5V$, $T_A = 25^{\circ}C$, unless otherwise noted.

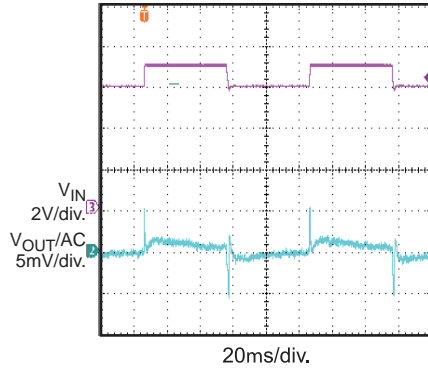
Load Transient

$V_{IN} = 12V$, $I_{OUT} = 300mA$



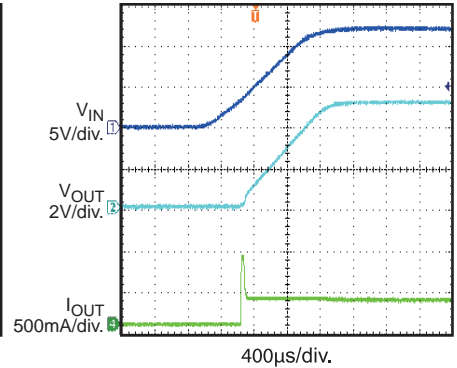
Line Transient

$V_{IN} = 6V-7V$, $I_{OUT} = 300mA$



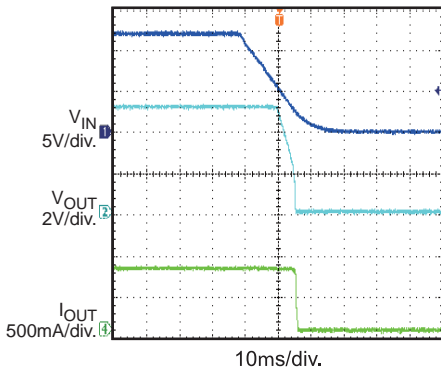
Startup through V_{IN}

$V_{IN} = 12V$, $I_{OUT} = 300mA$



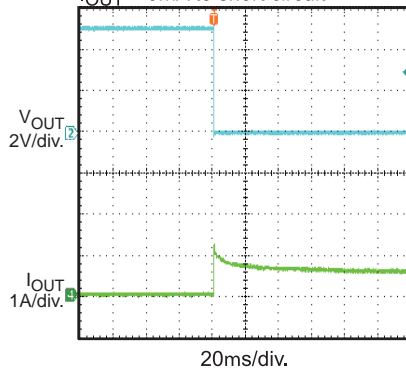
Shutdown through V_{IN}

$V_{IN} = 12V$, $I_{OUT} = 300mA$



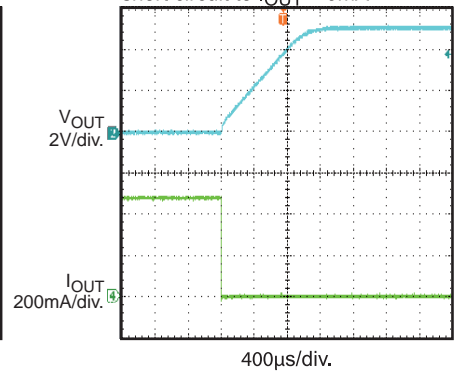
Short Circuit Entry

$V_{IN} = 12V$,
 $I_{OUT} = 0mA$ to short circuit



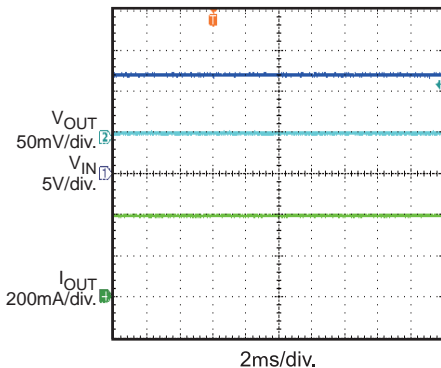
Short Circuit Recovery

$V_{IN} = 12V$,
short circuit to $I_{OUT} = 0mA$



Short Circuit Steady State

$V_{IN} = 12V$



PRINTED CIRCUIT BOARD LAYOUT

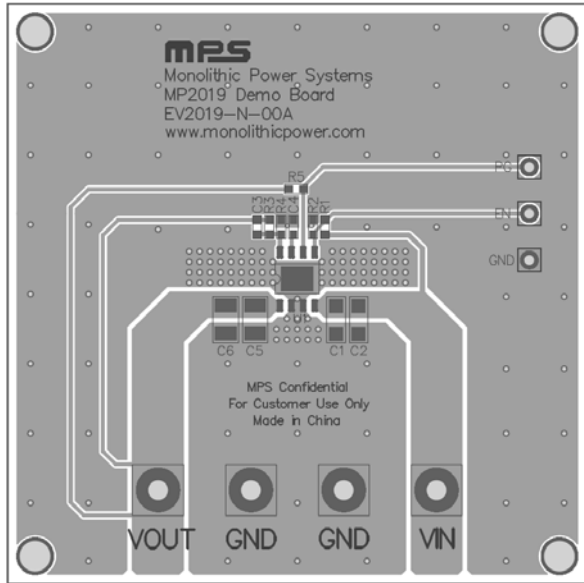


Figure 1—Top Silk Layer & Top Layer

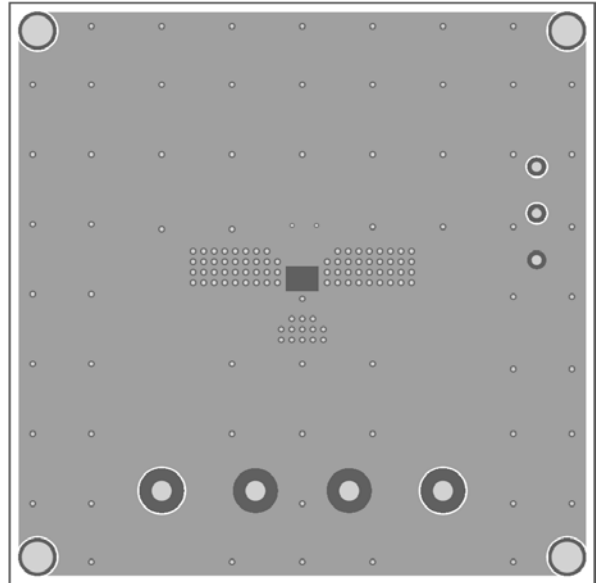


Figure 2—Bottom Layer

QUICK START GUIDE

1. Connect the positive and negative terminals of the load to the VOUT and GND pins, respectively.
2. Preset the power supply output between 6V and 40V, and then turn it off.
3. Connect the positive and negative terminals of the power supply output to the VIN and GND pins, respectively.
4. Turn the power supply on. The MP2019 and MPQ2019 will automatically startup.

NOTICE: The information in this document is subject to change without notice. Users should warrant and guarantee that third party Intellectual Property rights are not infringed upon when integrating MPS products into any application. MPS will not assume any legal responsibility for any said applications.